

Planet Nails is the Leading Supplier of Professional Nail & Beauty Products to Salons and Nail Technicians in SA.

Widest Range & Best Quality.

70+ Planet Stores across SA.

40+ Planet Schools across SA.

Pending Seta Accreditation.

Download Monthly Pricelists & Specials from our Website.

Call Centre ☎ 0861-4-NAILS
Website : www.planetnails.co.za
Email : sales@planetnails.co.za



PRECISION®
SOAK-OFF GELS



On-Line Shopping
1800+ Products

REVOLUTION
NAIL FORMS



EZEE-GEL

Nails on the Edge



PLANET NAILS
Distribution

PLANET STORES

| | | | |
|----------------------|-----------|----------------|---|
| Melville, JHB | Edna | (011) 482-6152 | Shop 20, Melville Boulevard Shopping Centre, cnr Main & Ayr, Melville, JHB. |
| Rodepoort | Leilani | (011) 768-4203 | Shop 6, Wilro Corner Shopping Centre, cnr Mimosa & CR Swart, Rodepoort. |
| Krugerdsorp | Landi | (011) 660-4910 | 29 Viljoen Street, Krugerdsorp North (near Key West Shopping Centre). |
| Randfontein | Chantel | (011) 692-4867 | 19 Union Street, Randgate, Randfontein. |
| Ormonde | Ronel | (011) 496-3018 | Shop 17, Gold Reef Emporia, 18 Crownwood Road, Ormonde, JHB. |
| Brackenhurst | Charlaine | (011) 867-0862 | HWS Building, 34 Hennie Alberts Str, cnr Swartkoppies, Brackenhurst. |
| Randburg | Cynthia | (011) 826-4720 | Shop 7a, Progress House, 110 Bordeaux Drive (cnr Maxwell), off Jan Smuts Ave. |
| JHB CBD | Lerato | (011) 333-3440 | Shop 6, Market Building, cnr Market & Kruis, JHB CBD (near Carlton Centre). |
| Newtown, JHB | Olivette | (011) 022-9673 | Shop 3, Newtown Mall, 161 Bree Street, JHB (near the Market Theatre). |
| Benoni | Tamaryn | (011) 918-3793 | Shop 16c, Westwood Village, cnr Phillips & Atlas Rd, Benoni. |
| Boksburg | Samantha | (011) 913-3744 | Shop 14a, Parkrand Piazza, 44 Van Wyk Louw Dr, Parkrand X1, Boksburg. |
| Kempston Park | Tammy | (011) 979-1097 | Shop 3, The Junction Shopping Centre, 212 Monument Rd, Glen Marais. |
| Brakpan | Yolandi | (011) 740-6733 | 753A Voortrekker Road, Brakpan. |
| Honeydew | Fred | (011) 795-1258 | Shop 27, Honeydew Shopping Centre, cnr Blueberry & Beyers Naude. |
| Germiston | Deidre | (011) 824-2039 | Unit 4, 54 Cachet Road, cnr Webber Road, Lambton, Germiston. |
| Kensington | Beth | (011) 622-1798 | 138 Queen Street, (just off Langerman Drive), Kensington. |
| Orange Grove | Lizelle | (011) 483-3601 | 196 Louis Botha Ave, just off Osborn Road, Orange Grove/Houghton Estate. |
| Bryanston | Mercia | 084-246-9655 | OPENING SOON |
| Alberton North | Joan | 084-401-0288 | 51 2nd Ave, cnr Hendrik Potgieter Drive, Alberton North. |
| Soweto | Thembi | 082-416-8739 | 1987 Nuse Str, cnr Vundla Drive, The Rock Centre, Rockville, Soweto. |
| Midrand | Tumi | 076-805-3767 | Shop 14, Midrand City, cnr Pretoria Main Rd (R101) & Tonnetti Str, Midrand. |
| Heidelberg/Nigel | Susan | 072-678-6786 | Shop 32, Heidelberg Forum, cnr Pretorius & Voortrekker Dr, Heidelberg. |
| Centurion | Eliza | (012) 643-0988 | Upper Level, Southlake Centre, cnr South Str & Lenchen Ave North, Centurion. |
| Pretoria North | Phumi | (012) 546-8550 | Shop 7, Pretoria North Medical Centre, 260 Burger Street, Pretoria North. |
| Sinoville, Pretoria | Lina | (012) 567-2087 | Cnr Zamezi Drive & Vinko Street, Sinoville. |
| Waverley, Pretoria | Cathlene | (012) 332-2526 | 1254 Starkey Ave, Waverley, Pretoria. |
| Pretoria CBD | Sebrina | (012) 323-0141 | Poynton's Building, 124 Church Str, cnr Bosman, Pretoria CBD (near Church Sq). |
| Menlyn/Pta East | Johannie | 083-414-5532 | Waterglen Centre, General Louis Botha Drive & Garsfontein Rd, Pretoria. |
| Nelspruit | Karen | (013) 741-2736 | Shop 89, cnr Le Roux & Laurie Str, Sonpark Shopping Centre, Nelspruit. |
| Rustenburg | Annemie | (014) 592-8664 | 4 Von Wielligh Street, Rustenburg. |
| Polokwane CBD | Omar | (015) 291-2963 | Shop 60b, Landross Mare Street, Polokwane CBD (cnr Grobler Street). |
| Polokwane | Omar | (015) 297-7915 | 100 General Maritz Street, Bendor, Polokwane. |
| Vanderbijlpark | Lylané | (016) 932-2383 | 5 Saamtrek Building, cnr Carter & Vivaldi Drive, SWS, Vanderbijlpark. |
| Vereeniging | Esther | (016) 422-7493 | Cnr Lesley & Beaconsfield Ave, 110 Spes Bona, Vereeniging. |
| Three Rivers | Lesinda | (016) 423-1577 | Shop 10, Nile Gate Centre, cnr General Hertzog & Nile Drive, Three Rivers. |
| Meyerton | Mandie | 084-549-2412 | Chazown Centre, Suite no 8, cnr Verwoerd & Reitz Road, Meyerton. |
| Secunda | Barbara | (017) 634-7180 | Shop 24, Secunda Mall, Secunda. (close to Pick 'n Pay). |
| Carletonville | Susan | (018) 787-3952 | 52 Van Zyl Smit Str, Carletonville. |
| Klerksdorp | Elzana | (018) 468-5900 | 81 Buffelsdoorn Road, Wikkopies, Klerksdorp. |
| Strand, S/West | Corlia | (021) 853-7349 | 54 Broadway Boulevard, Strand. |
| Goodwood, Cape Town | Lucille | (021) 592-2456 | 35 Vasco Boulevard, Goodwood, Cape Town. (entrance on Merriman Road) |
| Durban CBD | Ashraf | (031) 301-0842 | Suite 807, 8th Floor, Perm Building, 34 Field Street, Durban. |
| Durban, Morningside | Anisa | (031) 303-3369 | 258 Florida Rd (cnr Lambert), 1st Floor, Suite 107/108, Morningside, Durban. |
| Phoenix, Durban | Apritha | 078-176-4844 | Shop 23, Level 3, Acropolis Mall, 91 Parthenon Str (cnr Achilles Place), Phoenix. |
| Pietermaritzburg CBD | Bongi | (033) 342-0988 | Shop 1, Shepstone House, cnr Timber & Chancery Str, Pietermaritzburg CBD. |
| Richards Bay | Sibonile | (035) 789-7786 | Shop 8, Calypso Centre, Lira Link, Richards Bay. |
| Empangeni | Sibonile | (035) 772-6009 | Shop 4, NBS Building, 11 Commercial Road, Empangeni. |
| Port Elizabeth | Landie | (041) 363-8225 | 14A Worraker Street, Newton Park, Port Elizabeth. |
| East London | Belinda | (043) 721-1462 | Shop E, 9 Chelsea Centre, Gaston Road, Berea, East London. |
| Bloemfontein | Suzette | (051) 436-8722 | Suite 6, Dan Pienaar Mall, Prellerplein, Bloemfontein. |
| Bloemfontein CBD | Maria | 072-089-4451 | Shop 128, Sanlam Plaza, 25 Andrews Street, Bloemfontein CBD. |
| Potchefstroom | Marcia | 073-400-3900 | 33 Rivier Street, cnr Retief Street, Potchefstroom. |
| Upington | Alice | (054) 331-2424 | Shop 48, Pick 'n Pay Kalahari Centre, Le Roux Street, Upington. |
| Kimberley | Gerda | 082-650-5715 | 72 Long Street, Kimberley. |
| Newcastle | Charmaine | 079-412-2050 | 99 Victoria Street, Newcastle. |
| Hartbeespoort | Ilana | 071-244-4227 | Shop 11, Crossroads Shopping Centre, Verdi Street, Melodie, Hartbeespoort. |
| Jeffrey's Bay | Martie | 082-339-8328 | ABSA Building, Nautilus Centre, Diaz Road, Jeffrey's Bay. |
| Ermelo | Marlyn | 078-200-3515 | Shop 2, cnr Joubert & Jan van Riebeeck, Ermelo CBD. |
| Brits | Samantha | 072-956-7061 | 4A Kremetart Centre, Ludorf Street, Brits. |
| Modimolle/Nylstroom | Tharien | 072-614-2656 | Shoprite Centre, Nelson Mandela Drive, Nylstroom. |
| Witbank | Charlotte | 083-544-5643 | 28 Mandela Street, Witbank. |
| Windhoek, Namibia | Alet | +264 612-43404 | Shop 8, Garthani Park, Throppe Str, Southern Industrial Area, Windhoek. |
| Manzini, Swaziland | Bagezile | +268 505-3550 | Shop 4, cnr Martin & Mancishane Str, Manzini, Swaziland. |
| Mbabane, Swaziland | Gcebile | +268 404-9075 | African City Building, Gwamile Str, Mbabane, Swaziland. |

Want to open a Planet Nails Store?

Full details on our website or email us: distribution@planetnails.co.za
New Branch Office : Upper Level, Southlake Shopping Centre, Centurion

These areas still available :

Pinetown, Durban North/Umhlanga, Lower KZN, Bethlehem, Middelburg, Standerton, George/Knysna, ..

Call Centre Tel Nr : 0861-4-NAILS

0861-4-62457

| | |
|--|---|
| www.planetnails.co.za/contact.htm | Contact Details of Planet Nail Stores |
| www.planetnails.co.za/specials.htm | Weekly & Monthly Specials |
| www.planetnails.co.za/training | Eyelash, Beauty & Nail Training Details |
| www.planetnails.co.za/php | On-Line Shopping |
| www.planetnails.co.za/price.htm | Monthly Pricelist |

PRECISION[®]

SOAK-OFF GELS



www.planetnails.co.za

The Waiting is Over!!
Next Generation
Soak-Off Gels.
Stronger &
More Flexible.

- #6 Bright Blue
- #30 Shimmer Champagne
- #40 Bubblegum
- #27 Shimmer Rose
- #23 Mocca Brown
- #35 Envy
- #43 Postbox Red
- #41 Pink Rose
- #46 Burgandy
- #24 Bright Orange
- #38 Licorice
- #49 Shimmer Silver
- #29 Shimmer Lilac
- PRECISION Clear
- PRECISION Mega White
- PRECISION Light Pink
- #42 Coffee Brick
- #12 Glitter Gold
- #25 Magenta
- #47 Shimmer Pink
- #4 Shimmer Burgandy
- #5 Opaque Pink
- #9 Shimmer Burgandy
- #7 Purple Passion
- #8 Orange Pastels
- #3 Red Roses



- Shiny Finish
- Self Levels
- Easy Application
- Soak Off using Acetone

PRECISION[®]

SOAK-OFF GELS

3-D Moulds

- Cherry Blossoms s081
- Four-leaved Clover s082
- French Chrysanthemum s083
- Single & Double Heart s084
- Love Heart s085
- Double Heart s086
- 12 Stripes Petal s087
- Tulip Petal s088
- Orchid s089
- Rose Leaves s090
- Rose Petal s091
- Meli Rose Petal s092
- Cala Petal s093
- Sunflower s094
- Cala Leaves s095
- Xmas Flower s096
- Cross s097
- Rabbit s098
- Tropical Fish s099
- Star s100
- Star s101
- Star s102
- Star s103
- Star s104
- Star s105
- Star s106
- Star s107
- Star s108
- Star s109
- Star s110
- Star s111
- Star s112
- Star s113
- Star s114
- Star s115
- Star s116
- Star s117
- Star s118
- Star s119
- Star s120
- Star s121
- Star s122
- Star s123
- Star s124
- Star s125
- Star s126
- Star s127
- Star s128
- Star s129
- Star s130
- Star s131
- Star s132
- Star s133
- Star s134
- Star s135
- Star s136
- Star s137
- Star s138
- Star s139
- Star s140
- Star s141
- Star s142
- Star s143
- Star s144
- Star s145
- Star s146
- Star s147
- Star s148
- Star s149
- Star s150
- Star s151
- Star s152
- Star s153
- Star s154
- Star s155
- Star s156
- Star s157
- Star s158
- Star s159
- Star s160
- Star s161
- Star s162
- Star s163
- Star s164
- Star s165
- Star s166
- Star s167
- Star s168
- Star s169
- Star s170
- Star s171
- Star s172
- Star s173
- Star s174
- Star s175
- Star s176
- Star s177
- Star s178
- Star s179
- Star s180
- Star s181
- Star s182
- Star s183
- Star s184
- Star s185
- Star s186
- Star s187
- Star s188
- Star s189
- Star s190
- Star s191
- Star s192
- Star s193
- Star s194
- Star s195
- Star s196
- Star s197
- Star s198
- Star s199
- Star s200



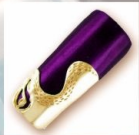
NEW PRODUCT DEC 09

PLANET NAILS
www.planetnails.co.za
CALL CENTRE ☎ 0861-4-NAILS

Habbil is a proven and effective learning tool & training instrument for all Professional Nail Technicians & Educators. Research shows that practice, persistence & good schooling are required to achieve perfection. Habbil allows for intensive & effective training.



PN806 - R850



PN810 - R850



PN801 - R850



P015 - R550

Ezee-Gel Colours (non-soak)

| | | | | | |
|--------------|------------------|-----------------|----------------|-------------------|------------------|
| 50 Neon Pink | 51 Neon Orange | 52 Pastel Peach | 53 Pastel Pink | 54 Jazzy Pink | 55 Manhattan |
| 56 Punch | 59 Mellow | 60 Berry | 61 Red | 62 Orange | 63 Desert Gold |
| 64 Lavender | 65 Cardinal Pink | 66 Green Grass | 67 Blue Skies | 68 Snow White | 69 Black B |
| 70 Blood Red | 71 Almond | 72 Magenta | 73 Fushia Pink | 74 Orange Blossom | 75 Planet Purple |

FILES / BUFFERS

- Yellow (220 grit), White (100) or Purple (120) Block Buffers
 Glitter Pink, Blue or Purple (120 grit) Block Buffers
 80/80 (coarse) or 100/100 (medium) - Black or White Files
 100/180 (medium/fine) Black or White Files
 100/180 Neon Files (pink / yellow / orange / green)
 120/240 Zebra Files (straight / teardrop / banana)
 100/100 Half Moon Shape File (boomerang) - Black
 100/180 Banana File - Black
 100/180 Teardrop File - Black or White
 100/100 FATTY File - 6mm - Black
 80/80 Red Mylar File - Professional X-Large Square
 100/180 White File - Professional X-Large Square
 280/320 Professional File
 Re-Usable Plastic Core for Files (inner)
 Replacement Grits (#100 or #180 black, or #240 zebra)
 3-Way Fatty Shiner (licorice)
 3-Way Fatty Shiner (girliend / purple deluxe)
 Sanding Sponge 80 - 7" Purple (coarse)
 Sanding Sponge 100 - 7" Orange (medium)
 Sanding Sponge 180 - 7" Blue (fine)
 Mini Sanding Sponges (purple/orange/blue)
 Sanding Sponge 220/280 - Half Moon - Grey
 Sanding Sponge 600 - Extra Fine - X-Large Square - White
 Miracle Shiner - Mini Size (1000/3000 grit) - Green
 Miracle Shiner - 4-Sided Block R12 Sandwich Type
 Miracle Shiner - Large Rounded - Green
 Miracle Shiner - X-Large Square - Green
 Crystal Glass File 14cm (red/blue/purple) Medium - Pointed
 Crystal Glass File 19cm (red/blue/purple) Large - Rounded
 Charms Foot R9 Charms Diamond Pro
 Pedicure Foot Files - Wooden or Plastic Types
 Ruby Stone Ceramic File & Holder
 File Display Racks - for storing 40 Files
 File Display Racks - for storing 150 Files

- PRICE**
 R7
 R7
 R7
 R5
 R5
 R5
 R5
 R5
 R5
 R5
 R7
 R20
 R10
 R10
 R11
 R11
 R11
 R11
 R6
 R11
 R11
 R11
 R11
 R8
 R12
 R15
 R20
 R20
 R20
 R18
 R18
 R15
 R14
 R50

BRUSHES

- Kolinsky Pink Wooden Handle #4
 Kolinsky Pink Wooden Handle #6
 100% Kolinsky Sable Acrylic Hand Brushes
 Kolinsky Brush #4 R55 Kolinsky Brush #6 R65
 Kolinsky Brush #8 R70 Kolinsky Brush #10 R75
 Kolinsky Brush #12 R80
 Nail Art Striping Brush R25
 Kolinsky Professional Acrylic Art / Sculpting Brush R55
 Nail Art Brush Set - 5 Brushes R75
 Nail Art Brush Set - 10 Brushes R150
 Brush Stand/Display - holds 12 brushes R75
 Gel Brush #4 Flat (clear handle or pink striped)
 Gel Brush #4 Flat or Filbert (white & gold handle)
 Brush Holder Cleaner Cup (holds up to 8 brushes)
 100ml Brush Cleaner Solution (prolongs brush life)
 500ml Brush Cleaner Solution - Refill
 Manicure Brush With Handle (various colours)
 Manicure Soft Dusting Brush (black with silver handle)
 Soft Dusting Brush (black with long silver handle)
 Deluxe Large Soft Dusting Brush (pink/blue/black/purple)
 Soft Bristle Dusting Brush (plastic handle clear/pink/blue)

- PRICE**
 R20
 R25
 R65
 R75
 R75
 R150
 R75
 R25
 R25
 R25
 R50
 R24
 R80
 R5
 R30
 R24
 R40
 R10



PRECISION SOAK-OFF GELS

www.precisiongel.co.za



UV LAMPS & EXTRAS

- 9W UV Replacement Globe R55
 9W Battery Operated UV Lamp (incl AC adaptor) R240
 9W UV Lamp - (1x5W) R199
 18W UV Lamp - (2x9W) - Pink R350
 36W UV Lamp - (4x9W) - Timer + Fan R550
 54W UV Lamp - (6x9W) - Timer + 2 Fans R1195
 200ml Gel Finishing Upe R30
 15ml UV GLAZE (clear, pink, white, glitter) R45
 Use on product, cure for 90 sec - seals & protects - high glossy shine
 Gel Nail Wipes - 200/pack - HANDS DOWN R50
 Gel Nail Wipes - 200/pack - Lint Free R25

- PRICE**
 R55
 R240
 R199
 R350
 R550
 R1195
 R30
 R45
 R50
 R25

EZEE-GEL

- 4ml EzeeGel - (clear / natural white / french pink)
 Non-Soak, very Strong, For Sculpture or Overlays
 4ml EzeeGel - (bright white) Non-Soak Off, For Overlays
 4ml EzeeGel - (clear, soak-off) For Overlays, thin
 4ml EzeeGel - (clear, soak-off) For Sculpture, thicker, stronger
 4ml EzeeGel - (9 glitter & 22 colours)
 Non-Soak, very Strong, For doing Sculpture or Overlays
 10ml EzeeGel - (clear, white, french pink) R120
 25ml EzeeGel - (clear, white, french pink) R220

- PRICE**
 R75
 R75
 R75
 R75
 R75
 R120
 R220

SOAK-OFF GELS

- 4ml Precision Gel - (see chart - 21 available)
 10ml Precision Gel - (Clear & French Pink)

- PRICE**
 R75
 R120

NAIL GLUES

- 3g Q2 Nail Glue - Oval Bottle R8
 6g Q2 Nail Glue - Brush-On R12
 14g Q2 Nail Glue - Brush-On R25
 Brush-Cap for 14g Glue R12



- PRICE**
 R8
 R12
 R25
 R12

ACRYLICS

- 50ml Monomer - Odourless R95
 50ml Monomer (violet) R40
 100ml Monomer (violet) R70
 200ml Monomer (violet) R120
 500ml Monomer (violet) R270
 30g Powder (french or competition pink/white/clear) R50
 100g Powder (french or competition pink/white/clear) R110
 200g Powder (french or competition pink/white/clear) R180
 30g Fast Set Powder (pink/white/clear) R50
 30g Powder - 500 (pink/white/clear) R50
 5g Colour Acrylic R18 30g Colour Acrylic R85
 Available in pastes / neons / glitter / nightclub / glow in the dark...
 10ml Nail Prep (dehydrates the nail plate) R15
 50ml Nail Prep - Refill R20
 10ml Nail Primer (prevents lifting) R25
 50ml Nail Primer - Refill R40
 10ml Sticky Bond-It (acid-free primer) NEW & IMPROVED R25
 50ml Sticky Bond-It - Refill NEW & IMPROVED R40
 Deluxe Primer Pen (inc 3 extra tips) R25
 10ml Tip Blender (easy blending of tips) R20
 10ml Line Eraser (removes fill lines) R35
 Plastic Dispenser Dropper R2
 Plastic Dappen Dish & Lid R5
 Glass Dappen Dish & Lid R14
 Frosted Glass Dappen Dish & Lid R35
 Triple Dappen Dish R15
 Ceramic Dappen Dish & Lid R15
 Sculpture Sticks - Aluminium (6 sizes) R95

- PRICE**
 R95
 R40
 R70
 R120
 R270
 R50
 R110
 R180
 R50
 R50
 R18
 R85
 R15
 R20
 R25
 R40
 R25
 R40
 R25
 R20
 R35
 R2
 R5
 R14
 R35
 R15
 R15
 R95



- PRICE**
 R15
 R20
 R25
 R40
 R25
 R40
 R25
 R20
 R35
 R2
 R5
 R14
 R35
 R15
 R15
 R95
 R15
 R40
 R25
 R40
 R25
 R20
 R35
 R2
 R5
 R14
 R35
 R15
 R15
 R95
 CP-87
 CP-51
 CP-33

NAIL TIPS

- ABS Virgin Plastic - Top Quality
 100 x Nail Tips (10 of each size + tip box)
 400 x Nail Tips (40 of each size + tip box)
 500 x Nail Tips (50 of each size in packets)
 Loose Nail Tips - FW or Natural - (50/packet)
 100 x FW Punched Tips (v, w, star, heart, flower, diamond, tree, bell)
 120 x Competition Tips (10 of each of 12 sizes + tip box)
 (Enhanced C, Enhanced Smile & No Vell) FW / Natural / Clear
 100 x Coloured Tips (13 colours available - black, red, pink, yellow, ...) R40
 100 x Pearl Tips (10 of each size + tip box) R40
 400 x Pearl Tips (40 of each size + tip box) R120
 Designer Airbrush Tips (20 tps/box) - Various Styles R40
 Designer Airbrush Tips (70 tps/box) - Various Styles R110
 Toe Nail Airbrushed Tips (20 tips/box) R36
 Full Nail Party Airbrushed Nails (24 nails + 2gr glue) R40
 Tip Box - Small Size - Holds 100 Tips (plastic) R15
 Tip Box - Large Size - Holds 400 Tips (plastic) R20

- PRICE**
 R30
 R95
 R95
 R15
 R40
 R40
 R40
 R40
 R40
 R40
 R120
 R110
 R36
 R40
 R15
 R20

On-Line Shopping

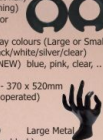


1800+ Products
 www.planetnails.co.za

CALL FOR INFO
 Tel : 0861-4-NAILS

ACCESSORIES

- Manicure Bowl (clear & colours) **R15**
- French Manicure Tip Guides x64 **R12**
- Plastic Student Training Bag **R20**
- Desktop Foam Rest **R25**
- Gold Nail Form Dispenser **R50**
- Re-Usable Nail Forms (5/box) **R40**
- Gold Nail Forms - 500/roll (horseshoe or square) **R50**
- REVOLUTION Nail Forms (100/box) **R150**
- REVOLUTION Nail Forms (300/box) **R325**
- REVOLUTION S1 & S2 Large size forms (10 of each size) **R25**
- Toe Separators (per pair) - Various Colours **R5**
- Pedice Spa Slippers (per pair) - Various Colours **R6**
- Glass Display Hand (black or white) **R60**
- Nail Clipper Covers (10/box) **R30**
- Nail Form Holder / Titer (pink or white) **R25**
- Rubber Practice Hand (2 types - soft / hard) **R70**
- Rubber Practice Hand + Goose Neck Handle **R299**
- Finger Cots (20/box) - Also in Pink Colour - R3 more **R5**
- Practice Finger (with nail/without nail) **R8**
- Finger Rest (for nail/airbrushing) **R6**
- Flex Wrap Tape - Finger Protector **R25**
- Table Mats (white, lint free) **R4**
- Nail Polish Rings (25) - to display colours (Large or Small) **R50**
- Acrylic Desk Tidy Organiser (black/white/silver/clear) **R130**
- Acrylic Desk Tidy Transparent (NEW) blue, pink, clear, ... **R55**
- Business Card Holder **R40**
- Framed Nail Posters - 32 Types - 370 x 520mm **R60**
- Nail Dryer (auto on/off, battery operated) **R60**
- Seiko Desktop Fan **R145**
- Sterilizer Tray Unit - Plastic **R75**
- UV Sterilizer Large Plastic **R450** Large Metal **R660**
- 12-Polish Desktop Stand (clear or black) **R60**
- 40-Polish Desktop Stand (clear or black) **R90**
- 90-Polish Wall Mounted Stand (clear) **R200**
- 90-Polish Desktop Deluxe Stand (perspex, clear) **R340**
- 240-Polish Desktop Deluxe Stand (metal, black) **R395**



TREATMENTS

- Brucci Nail Hardeners (132 colours) 15ml **R65**
- Brucci Miniatures French/Gift of Color Collection (6x1/4oz) **R195**
- Brucci Nail Treatments **R75**
- Silk Wrap**
- Acrylic Shield**
- Nail Polish Dryer**
- 2-in-1 Nail Prep**
- 2-in-1 Nail Perfection**
- Brucci Basecoat**
- Calcium Protector**
- Miracle Nail Hardener**
- 3-in-1 Manicure Sealer**
- Rosewood Cuticle Oil**

- SPA Pedicure Herbal Crystals / Caviar **R12**
- Salon Aroma Bags (lavender/citrus/ocean breeze,...) **R10**
- 10ml French Manicure Pink or White Nail Polish **R15**
- Deluxe Polish Corrector Pen (inc 3 extra tips) **R20**
- Variety Nail Treatment **R85**
- 5ml Topcoat (various colours + flowers) **R5**
- 10ml Nail Polish Thinner **R10** 100ml Nail Polish Thinner **R25**
- 10ml Peach Cuticle Oil **R15** 100ml Peach Cuticle Oil **R35**
- 10ml Base Coat **R15** 100ml Base Coat **R35**
- 17ml Cuticure Oil with Flowers (Lily, Lavender, Rose, Bouquet) **R18**
- 10ml Peach Cuticle Oil Stick **R30**
- 10ml Cuticle Softener/Remover **R18**
- 10ml Thymol Anti-Fungus **R25**
- 10ml Quick Dry Oil **R15**
- Deluxe Cuticle Oil Pen (inc 3 extra tips) **R25**
- 125ml Cuti-Spray - (cuticle oil spray) **R45**
- 120ml Fast Dry Spray (dries nail polish) **R30**
- Demert Fast Dry Spray (dries nail polish) **R65**
- Genia Ultimate SPA - (paraffin / Luac soap / Lotion) **R60**
- 10ml Top Coat (non-yellowing, quick dry) **R15**
- 100ml Top Coat - Refill **R35**
- 10ml Silver Holographic Top Coat (quick dry) **R20**
- 10ml UV Topcoat **R20**
- 10ml Glass Sealer (gloss, non yellowing, air dry) **R35**
- 10ml Glitter Glass Sealer **R30**
- 10ml Intense Strengthener (natural nail strengthener) **R20**
- Body Butter/Scrub/Lotion (lemon/pomegranate/papaya,...) **R30**
- Shampoo/Gel/Conditioner (lavender/jasmine/olive oil,...) **R35**

SANITIZERS

- 250ml Waterless Handwash **R19**
- 125ml Sani-Spray Antiseptic - Spray **R25**
- 1L Sani-Spray Antiseptic - Refill **R60**
- 500ml Anti-Bacterial Handwash **R25**
- 5L Anti-Bacterial Handwash **R75**

SILK / FIBRE

- 50ml Resin Activator - Spray **R30**
- 200ml Resin Activator - Refill **R65**
- 200ml Resin Activator - Aerosol Tin **R60**
- 500ml Resin Activator - Refill **R130**
- 20g Resin Glue (incl 2 extender nozzles) **R40**
- Extra Extender Nozzles **R2**
- Stork Scissors (silver/gold) **R45**
- Silk or Fibre Strips - 2 x 1m (self adhesive, non fraying) **R35**

PRICE



PRICE



PRICE



PRICE



IMPLEMENTS / TOOLS

- Orangewood Sticks - 10cm - Short (30/pkt) **R16**
- Orangewood Sticks - 18cm - Long (10/pkt) **R8**
- Orangewood Sticks - 18cm - Long (100/pkt) **R35**
- Sanding Sticks - 18cm - Long - Coloured (10/pkt) **R25**
- Foot Rasp **R12**
- Plastic Corn Cutter (replaceable blades) **R15**
- Stainless Steel Corn Cutter (replaceable blades) **R30**
- Replacement Blades For Corn Cutter (10/box) **R11**
- Plastic Cuticle Pusher + Trimmer **R7**
- Deluxe Cuticle Pusher - Stainless Steel **R40**
- Ezee-Smile Shaping Tool **R22**
- Nail & Cuticle Scissors **R15**
- Magic Wand Tool **R80**
- Tip Clipper (chrome/black/pink) **R35**
- Tweezer with LED (Red or blue) **R25**
- Tweezers (chrome/pink/plastic top) **R14**
- Art Tweezers (long, pointed, non-magnetic) **R25**
- Chrome Nail Cutter Pro / Chrome Cuticle Nipper Pro **R40**
- Cuticle Nipper/Trimmer (slanted blade, chrome) **R7**
- Pink Laser Trapper Clipper **R15**
- Nail Clipper - Small **R5** Nail Clipper - Large (chrome) **R10**
- Manicure Nail Drill + 5 Drill Bits (battery operated) **R89**
- Drill Bits (5 assorted bits) **R30**
- Drill Bits (30 assorted bits) **R55**
- Drill Bits (13 white per box) **R95**
- Non-Carbide Drill Bits (football/backfill,...) **R75**
- Sanding Roller Mandril Bits **R30**
- Sanding Rollersx3 (1xcourse, 1xmedium, 1xsoft) **R9**
- Electric Drill (auto choke, foot attachment, drill bits, 25,000rpm) **R1350**

SOAK-OFF SOLUTIONS

- Single Dipper (pink or black) **PRICE**
- Mani - Soak Bowl (hot water in bottom) - pink or blue **R10**
- Finger Spa's - Soak On The Move! (10/pkt) **R32**
- 1L Acetone **R25**
- 5L Acetone **R98**
- 1L Non-Acetone **R45**
- 5L Non-Acetone **R150**
- Metal Mends Pump 236ml - Clear **R35**
- Mends Pump 175ml Round - Pink Top **R25**
- Mends Locking Pump 236ml Square - White Top **R25**
- Alcohol Dispenser 150ml (pink, green, blue, yellow) **R35**

MEHAZ IMPLEMENTS

- Mehaz Tip Cutter (chrome, black, mauve) **PRICE**
- Mehaz Comfort Grip Nipper (black or red) **R175**
- CALL FOR PRICING ON OTHER MEHAZ PRODUCTS **R325**

NAIL ART

- LARGEST RANGE IN SA**
- 3D Nail Art Stickers - Large Variety **PRICE**
- Stone Eye Lid Stickers - Large Variety **R10**
- Gold & Silver Foil (per jar) **R14**
- Lake Pattern Art (white or black) **R14**
- Sparkles & Spangles (glitter/gold/silver/red,...) **R14**
- Dried Flowers - 15 Types (per jar) **R14**
- Metallic Flowers (5) **R14**
- Fine Glitter Jar Art (3) Assorted or Silver/Gold/Pearl **R10**
- 20x Clear or Coloured Rhinestones (round/square/teardrop/flower/boots/star/heart) **R14**
- Butterfly/Sandall/Tortoise Fimo Art - each **R2**
- Fimo Sliced Fruit (30/2ar) 10 Types (per jar) **R16**
- Fimo Sliced Fruit (144/Carousell) 12 Types **R65**
- Crushed Shell/Mother of Pearl - 10 Colours - (per jar) **R14**
- Glass Beads/Ice Mylar - 10 Colours - (per jar) **R14**
- Thorn Glitter - 10 Colours - (per jar) **R14**
- Glitter & Fine Glitter - 10 Colours - (per jar) **R14**
- Nail Polish / Gel Colour Wheel **R8**
- Nail Dangles & Charms - Large Variety **R14**
- Gold Nail Drill **R15**
- Striping Tape (gold/silver/red/yellow/black/blue,...) **R30**
- Striping Tape - Holographic (silver or gold) **R35**
- Case - 450 Rhinestones (clear/colours/round/shapes) **R35**
- 1440 Clear Rhinestones (clear/colours/round/shapes) **R75**
- Re-usable Nail Art Stencil (for airbrush & nail polish) **R30**
- (32 different stencils available - 8 designs per stencil)
- Nail Art Stamping Metal Disc **R20**
- (60 different discs available - 7 designs per disc)
- Nail Art Stamping Tool (stamp & blade) **R20**
- 3-D Nail Art Moulds (82 Designs) **R55**
- Rhinestone Jewellery Case (empty, large) **R10**
- Rhinestone PICKerr Upper Tool **R40**
- Drilling Tool **R16**
- La-Nail Striper Pens (primaries, glitters, pastels) **R25**
- Toe Rings - Single (blue/clear/pink) **R18**
- Other Toe Rings (bugs/sandals,...) **R28**
- Toe Rings Display - 8 Bars (clear or black) **R20**
- 10ml Body & Face Glue (2-3 days) for Rhinestones **R20**
- Magnifying Glasses (for art, permanent make-up,...) **R390**
- Nail Art Display Stand (white or black) **R38**
- CP-33 Color Pops 33 Nail Art Display **R195**
- CP-51 Color Pops 51 Nail Art Display **R250**
- CP-87 Color Pops 87 Nail Art Display **R225**

NAIL KITS

These kits do not contain manuals or certificates.

PRICE

Acrylic Dip Kit

125ml Sand, 100 Nat & 100 FW Tips, 14g Glue, Tip Cutter, 2 Files, Buffer & Shiner, 10ml Prep, 10ml Primer, #4 Kolinsky Brush, 30g White & 30g Pink Acrylic Powder, 50ml Resin Activator, French Mani Guides, 10ml Cuticle Oil, Glue Holder, Dusting Brush, Menda Pump, 100ml Acetone, Training Basket.

R550

Acrylic Kit

125ml Sand, 100 Nat & 100 FW Tips, 14g Glue, Tip Cutter, 2 Files, Buffer & Shiner, 10ml Prep, 10ml Primer, #4 Kolinsky Brush, 30g White & 30g Pink Acrylic Powder, 100ml Monomer, Dropper, Dappen Dish, 10ml Cuticle Oil, Dusting Brush, Menda Pump, 100ml Acetone, Training Basket.

R620

Gel Kit

125ml Sand, 100 Nat & 100 FW Tips, 14g Glue, Tip Cutter, 2 Files, Buffer & Shiner, 10ml Bond-Gel Brush, 4ml Colour, Clear & White gel, 200ml Finishing Buffer, 200 Nail Wipes, 10ml Cuticle Oil, Dusting Brush, Menda Pump, 100ml Acetone, 9W Gel Lamp, Training Basket.

R900

Silk / Fibre Kit

125ml Sand, 100 Nat & 100 FW Tips, 14g Glue, Tip Cutter, 2 Files, Buffer & Shiner, 10ml Cuticle Oil, Dusting Brush, 1.8m Silk & 1.8m Fibre, Stone Soaker, 20g Resin Glue, 50ml Resin Activator, Menda Pump, 100ml Acetone, Training Basket.

R530

Manicure / Pedicure Kit

125ml Sand, French Pink & White Polish, Base & Top Coat, Bruci Colour Paint, Corrector Pen, French Mani Guides, File, Buffer & Shiner, 10ml Cuticle Remover, 10ml Cuticle Oil, Cuticle Nipper, Manicure Bowl, Dusting Brush, Menda Pump, 100ml Acetone, 1kg Mani/Pedi Soak, 1kg Scrub, 1kg Balm, Toe Separator, Foot File, Training Basket.

R575

Full Kit (Acrylic, Gel, Silk/Fibre, Dip) Combination of the above 4 kits. R1460

9CT GOLD NAILS

NAILS

View our website to see all the designs.

PRICE

PN801-S, PN803, PN804-S, PN805-S, PN806-S, PN808, PN808-S, PN809-S, PN810-S, PN811, PN811-S, PN812-S, PN813, PN817-S, PN815-S, PN816-S, PN818-S

R850

PN807-S-H, PN814

R950

PN802 (up to 7 letters)

R1050

STUDS

P010, P015

R550

P008, P018, P013-S, P024-S

R595

P004, P001-S, P007, P004-S, P005

R695

Gold Nail Kit (tools for fitting the nails)

R275

Spare Nuts for the Gold Nails

R40



www.planetnails.co.za/gold.htm

REVOLUTION NAIL FORMS

Full set of Nail Overlays or Extensions in 30 mins. Using only a Brush, Acrylic Monomer & Powder. Unmatched Art & Design possibilities using glitter or coloured acrylics & more. NO Glue or Tip needed. Nail Forms are Re-Usable. Instant Shiny Finish - NO Buffing or Rub.

FOR PROFESSIONAL USE ONLY

How to Build a French Sculptured Nail



www.planetnails.co.za/revolution

EZEE-WAX



Easy to achieve Unlimited Nail Arts using colour/gitter powders, colorize them: glitter, sparkles, sparkles, etc

WAX, TINT & BEAUTY

- 1kg Paraffin Wax (peach/lavender/strawberry/vanilla,...) R83
- 800g Hot / Cold Wax Tins (azulene/lavender/pearl,...) R50
- 500g Hot Wax Muffins - 6's (azulene/lavender/butter,...) R83
- Paraffin Wax Warmer - Large 2.5kg R675
- Paraffin Wax Warmer - Mini R220
- Hot/Cold Wax Warmer Unit (for 500 & 800g tins) R474
- Wax Pot Warmer Unit - Large (for 800g tins) R595
- Single 100g Cartridge Wax Roller R245
- Triple 100g Cartridge Wax Roller (fits 3x 100g cartridges) R595
- 100g Cold Wax Cartridge + Head (azulene/pearl/butter,...) R23
- 10g Spatulas (100/box) R110
- Tongue Depressors (100/box) R12
- Wax Collars (20/packet) R30
- Wax Spatula (plastic) R4
- 500ml Citri-Clean (to dean wax equipment) R40
- 400g After-Wax Lotion (removes redness/sensitive skins) R40
- 400g Pre-Wax Gel (ind. menthol crystals) R90
- Bandy Roll - 100m R95
- Bandy 100 Body Pre-Cut Strips R35
- Bandy 100 Facial Pre-Cut Strips (small) R20
- Paraffin Protector Bags (50) R15
- Booties/Mittens - For Paraffin Treatments (pair) R40
- Wax Sheet for Bed (plastic) R50
- Refectocil Tint (black/brown/blue-black) R40
- Refectocil Tint Sheets R3
- Plastic Tint Bowl R8
- Glass Tint Bowl R12
- 100ml Peroxide (10 vol) R5
- Tint Brush - Small (retractable) R15
- Tint Brush - Long R120
- Professional Make-Up Brush Set (12 brushes) R22
- Max Factor Eyelash Extensions (short or medium) R36
- Ardell Eyelash Extensions (short or medium) R42
- Ardell Eyelash Adhesive (clear/dark) - Individual Lashes R42
- Ardell Eyelash Adhesive (clear) - Strip Lashes R35
- Ardell Eyelash Remover R25
- EYE Adhesive 7gr (clear or dark) R15
- Strip Lashes (12 designs) R75
- Deluxe Mascara Set - Extend & Thicken Lashes

MANI, PEDI & BEAUTY

- Manicure Pillow (cloth) Various designs R25
- Manicure Pillow (leather) Various colours R40
- Facial Masks (100/box) R50
- Latex Gloves (100/box) R20
- Disposable G-String Panty (6/pkt) R9
- Disposable MOP Caps (10/pkt) R6
- Lancets (200/box) R40
- Round White Cotton Pads (80/Pkt) R14
- Square White Cotton Pads (80/Pkt) R15
- White Cotton Balls 100g R13
- Cotton Buds (100/pack) R5
- Facial Gauze (100x100, 100/pack) R20
- Alcohol Swabs (200/box) R25
- Facial Sponges (2/pkt) R8
- Facial Sponge (orange) R18
- Kidney Bowl (blue, plastic, small) R23
- Kidney Bowl (blue, plastic, large) R20
- Flexible Facial Mixing Bowl - small R17
- Flexible Facial Mixing Bowl - large R17
- Comedone Extractor (double) R15
- Comedone Extractors (12/pack) R55
- 100ml Massage Oils (grapeseed or peppermint) R15
- 500ml Massage Oils (grapeseed or peppermint) R55
- 100g Massage Creams (butti frutti / ck / lavender) R105
- 300ml Ezee Mani/Pedi Revitalizing Mist R35
- 1kg Ezee Mani/Pedi Soak R40
- 1kg Ezee Mani/Pedi Scrub / Balm / Mask R16
- 100g Ezee Mani/Pedi Scrub / Balm / Soak R65
- 5 Litre Distilled Water R25

PN1 WORLDWIDE

- NN African Manicure Acrylic Collection Kit R195
- NN Sahara Sunset 1/2 oz R45
- NN Kilimanjaro White 1/2 oz R45
- NN Powder Zaz - 7 types R132
- NN Advanced Retention Liquid - 4oz R132
- NN UV Gel 1oz - 7 types R175
- NN Finishing Wipe 4oz R40
- Xtreme Pro Nail Tips (Cut-Out) - 500ct R330
- Xtreme Designer Service R132
- Xtreme Toe Tips 32ct R45
- NN Glass Sealer - 5oz R55
- NN Glass Sealer - 2.5oz R175
- NN Shimmer Soak - 5oz R62
- NN Super Seal UV Gel Sealer R125
- NN Super Fast Set Top Coat - 5oz R55
- NN Super Fast Set Top Coat 2.5oz R80
- Xtreme Intense Cranberry / Peach / Almond Oil 2.5oz R65
- Xtreme Intense Bond Milky Base Coat 2.5oz R65
- Xtreme Intense French Brightening Top Coat 2.5oz R80
- Xtreme Intense Strength Natural Nails 2.5oz R65

Visit website for other PN1 Products

Visit website for other PN1 Products

Visit website for other PN1 Products

Visit website for other PN1 Products

Visit website for other PN1 Products

Visit website for other PN1 Products

Visit website for other PN1 Products

Visit website for other PN1 Products

Visit website for other PN1 Products

Visit website for other PN1 Products

Visit website for other PN1 Products

Visit website for other PN1 Products

Visit website for other PN1 Products

www.planetnails.co.za/pni.htm

PLANET LASHES

EYELASH EXTENSIONS

Professional Products & Training

Professional Eyelash Extension Course

1 Day Course
Includes Lash Tinting, Comprehensive Kit, Manual & Certificate.

R2900

2 Day Course available @R2995

SPECIAL

Kit Contents

- | | |
|------------------------|----------------------|
| White Tape | Cotton Pads |
| Eyebrow Brush | 100ml Peroxide |
| Fan Brush | Collagen Eyepads |
| Straight Tweezer | Finger Cots |
| Curved Tweezer | Masks |
| Scissors | Sq Empty Jar |
| Glass Plate | Table Mat |
| Air Blower | Planet Nails Bag |
| Clear Bonder (Glue) | 125ml Sansi Spray |
| Black Bonder (Glue) | Strip Lashes |
| Glue De-bonder | Lash Coating |
| Lash Cleanser | Woven Cap |
| Black Lashes | 100ml Acetone |
| Coloured Lashes | Vaseline |
| Kidney Bowl | Make Up Remover |
| Tint Bowl | Cotton Earbuds (100) |
| Plastic Dropper | Manual |
| Tint Brush | Client Record Card |
| Reflectoal Black Tint | Indemnity Form |
| Reflectoal Tint Sheets | Certificate |

Eyelash extensions are a procedure which extends your lashes with new weightless and natural looking synthetic lashes. The synthetic lash is applied hair by hair to each of your own lashes with a special bonding agent which lasts the duration of the natural growth cycle of each lash, roughly 2-3 months. A retouch is needed every 3-4 weeks. Master the techniques of eyelash extensions by attending the course. Start a new career as a lash extensionist or supplement your income by offering extra services to your customers.



EYELASH EXTENSION PRICE LIST

| | | | |
|--|--------------|--|--------------|
| LASHES | | LASH TWEEZERS | |
| Eyelash C-Type (0.10mm lash thickness) Available in lengths of 8mm, 10mm, 12mm, 13mm | OR55 | Tweezer with Light (pink or black) | OR25 |
| Eyelash C-Type (0.15mm lash thickness) Available in lengths of 8mm, 10mm, 12mm, 13mm | OR55 | Tweezer Black X-Shape | OR25 |
| Eyelash Y-Type (0.15mm lash thickness) Available in lengths of 8mm, 10mm, 12mm, 13mm | OR55 | Black Straight Tweezer (anti-magnetic, anti-acid) | OR25 |
| Eyelash Y-Type (0.20mm lash thickness) Available in lengths of 8mm, 10mm, 12mm, 13mm | OR55 | Black Eagle Beak 45° Curved Tweezer (anti-magnetic, anti-acid) | OR25 |
| Eyelash T-Type (0.10mm lash thickness) Available in lengths of 8mm, 10mm, 12mm, 13mm | OR55 | EXTRAS | |
| Eyelash T-Type (0.15mm lash thickness) Available in lengths of 8mm, 10mm, 12mm, 13mm | OR55 | Large Blower | OR28 |
| Silk Lashes C-Type (0.20mm lash thickness) Available in lengths of 9mm, 10mm, 11mm, 12mm, 13mm | OR55 | Collagen Crystal Eyelid Patches | OR10 |
| Silk Lashes 2-Type (0.20mm lash thickness) Available in lengths of 8mm, 10mm, 12mm, 13mm | OR55 | Crystal Glass Plate (for bondor) | OR35 |
| Mink Lashes (0.15mm & 0.20mm lash thickness) Available in lengths of 8mm, 10mm, 12mm | OR95 | Black Lash Coating | OR35 |
| | OR55 | Clear Eyelash Nutrition / Coating | OR35 |
| | OR55 | Magnifying Glasses with Light | OR390 |
| | OR95 | Practice Strip Lashes | OR190 |
| | OR55 | White Tape | OR5 |
| | OR145 | Eyelash / Eyebrow Brush | OR5 |
| | OR245 | EyeLash Kit in Aluminum Suitcase | OR650 |
| BONDERS & DEBONDER | | | |
| Eyelash Bondor | | | |
| Eyelash Bondor (standart) | | | |
| Eyelash Bondor (odorless, for sensitive eyes, keep refrigerated) | | | |

www.planetnails.co.za

EQUIPMENT

| | | | |
|--|--|---|---|
| <p>800g Epilation Wax Warmer R595</p> <p>Dual Head Ozone Facial Steamer R1299</p> <p>2.5Kg Paraffin Wax Warmer R675</p> <p>Gas Lift Chairs + Backrest R490</p> <p>Dust Collector R425</p> <p>Pedi SPA Station R18500</p> | <p>Infra-Red Sauna's Detox, Weight loss, ... from R7,250</p> <p>MAG Lamps RB55 Stand for Lamps R285</p> <p>Electric Nail Drill R1350</p> <p>9W UV Lamp R199</p> <p>500/800 Epilation Wax Warmer R475</p> <p>Large Beauty Case R1599</p> <p>Medium R299</p> <p>Small R199</p> | <p>Glass Table Double R2760</p> <p>54W UV Lamp 6 x 9W R1195</p> <p>Massage Bed + Breathing Hole R1150</p> <p>Portable Massage Bed R1850</p> <p>Esthetician Trolley R995</p> | <p>Glass Table Single R2520</p> <p>Single Wax Cartridge System R245</p> <p>Triple Wax Cartridge System R595</p> <p>UV Sterilizer R450</p> <p>Ergonomic Chair R550</p> |
|--|--|---|---|

BEAUTY COURSES

Manicure/Pedicure

DAY 1

09:00 - 12:00
Theory
12:00 - 13:00
Lunch Break
13:00 - 16:00

Demo on Manicure Procedures.
Students Perform Manicure on Live Model.

DAY 2

09:00 - 12:00
Demo on Basic Pedicure
12:00 - 13:00
Lunch Break
13:00 - 16:00

Students Perform Pedicure on Live Model.

Kit Content

Menda Pump
Acessories 100ml
Brucci Nail Polish Red
French Pink Polish
French White Polish
Top Coat 10ml
Nail Art
Foam Slippers
Gel Brush
Finger Cots (20)
Masks
Therapist Pinny
Brush-On Gel
Silk
50ml Resin Activator
Stork Scissors
Training Basket
Manual & Record Cards

Make-Up

DAY 1

09:00 - 12:00
Theory
12:00 - 13:00
Lunch Break
13:00 - 16:00

Demo and Application of Day Make-Up.

DAY 2

09:00 - 12:00
Demo and Application of Eye Make-Up
12:00 - 13:00
Lunch Break
13:00 - 16:00

Demo and Application of Day Make-Up.

DAY 3

09:00 - 12:00
Demo and Application of Fantasy Make-Up.
12:00 - 13:00
Lunch Break
13:00 - 16:00

Practical Application

2009 Course Dates

28-30 Oct, 4-6 Nov, 13-15 Nov,
28-30 Nov, 27-29 Dec, 2-4 Dec,
9-11 Dec, 16-18 Dec.



R4500

3 Day Course

Kit Content

12' Foundation Palette
32' Eye Shadow Palette
16 Lipstick Palette
20 Powder
Lip & Eye Pencils
Masque
Powder Puff
Lashes Wedges
Make-Up Sponge
Make-Up Spatula
Make-Up Brushes
Sharpen
Make-Up Remover
Face & Body Glue
450 Rhinestones
Party Lashes
Sani-Spray 125ml
Cotton Earbuds
Facial Sponges
Shimmer/Glitters
Twizzer
Therapist Pinny
Manual & Record Cards
Kryolan Make-Up Bag



Waxing / Tinting

DAY 1

09:00 - 12:00
Theory
12:00 - 13:00
Lunch Break
13:00 - 16:00

Eyebrow Shaping
Eyebrow and Eyelash
Tinting

Course Dates

Same Dates as the Make-Up Training



DAY 2

09:00 - 12:00
Demo on Cold Wax System
Application and Removal of Full Leg Waxing

DAY 3

09:00 - 12:00
Application and Removal of Arm Waxing
Application and Removal of Eyebrow, Upper Lip and Chin Waxing

R3200

3 Day Course

Kit Content

Vinyl Gloves
Masks
Therapist Pinny
Round Cotton Pads
Kidney Bowl
Sani-Spray 125ml
Wat Pot 800g
Pre-Cut Wax Strips (100)
Pre-Lotion 400ml
Post-Lotion 400ml
Citic-Clean 500ml
Facial Spatula (100)
Tongue Depressors (100)
Wax Collars (5)
Hot Wax 800g
Cold Wax 800g
Disposable G-Strips
Facial Gauze
Blood Lancets
Cotton Earbuds
Vaseline
Refectocil Brown Tint
Refectocil Black Tint
Refectocil Blue Tint
Refectocil Protector Papers
Tint Bowl
Tinting Brush
Eyebrow Brush
Tweeze
Peroxide
Dispenser Dropper
Training Basket
Manual & Record Cards



EYBLASH EXTENSION COURSES @R2500



visit www.eyelash.co.za for a list of schools

NAIL TRAINING COURSES

Gel Course

DAY 1

Theory
Lunch Break
Basic Manicure
Tip Application (Prac. Hand)

DAY 2

Basic Manicure
Tip Application (Prac. Hand)
Tip Overlay (Prac. Hand)
Lunch Break
Basic Manicure
Sculpture (Prac. Hand)

DAY 3

Work on Live Model
Basic Manicure
Tip Overlay
Lunch Break
Work on Live Model
Basic Manicure
Sculpture
Incl. Fills, Repairs, Removal.

2009 Course Dates

26-28 Oct
9-11 Nov
23-25 Nov
7-9 Dec



R2395

3 Day Course

Kit Content

Finger Cots (20)
Practice Finger
Facial Mask
Cotton Wool
Nail Wipes x50
Orangewood Stick
Plastic Cuticle Pusher
Nail Clipper
Tip Overlay
Glass Dappen + Lid
Menda Pump
3D Nail Art Sticker
Dusting Brush
Gold Nail Forms x50
100xTps French
400xTps Natural
Brush-On Glue 14g

Silk/Fibre

DAY 1

Theory
Lunch Break
Basic Manicure
Tip Application using Practice Hand
Tip Overlay using Practice Hand

DAY 2

Work on a Live Model
Basic Manicure
Tip Application
Product Application Silk
Lunch Break
Work on a Live Model
Basic Manicure
Tip Application
Product Application Fibre
Incl Fills, Repairs, Removal.

2009 Course Dates

29-30 Oct
12-13 Nov
26-27 Nov
10-11 Dec



R1600

2 Day Course

Kit Content

Finger Cots (20)
Practice Finger
Mask
Cotton Wool
Nail Wipes 50x
Orangewood Stick
Plastic Cuticle Pusher
Nail Clipper
Tip Overlay
Glass Dappen + Lid
Menda Pump
Dusting Brush
3D Nail Art Sticker
100xTps+Box FW
100xTps+Box Natural
Q3 Brush-On Glue 14g
Tweezer

20g Resin+2 Nozzles
Practice Finger x2
Miracle Shiner 10ml
Top Coat 10ml
Cuticle Oil 200ml
Acetone 50ml
Sani-Spray 50ml
Anti-Bacterial Soap
Student Training Bag
Silk/Fibre Manual
Client Record Card x4
Fibre Strips - 1.8m
Silk Strips - 1.8m
50ml Resin Activator
Stork Scissors

Acrylic Course

DAY 1

Theory
Lunch Break
Basic Manicure
Tip Application (Prac. Hand)

DAY 2

Basic Manicure
Tip Application (Prac. Hand)
Product Application on Practice Sheets
Lunch Break
Tip Overlay (Practice Hand)

DAY 3

Work on a Live Model
Basic Manicure (1 Hand)
Tip Overlay (1 Hand)
Lunch Break
Work on a Live Model
Basic Manicure (1 Hand)
Sculpture (1 Hand)

DAY 4

Work on a Live Model
Repeat day 3
Incl Fills, Repairs, Removal.

2009 Course Dates

2-5 Nov
16-19 Nov
30 Nov - 3 Dec
14-17 Dec



R2950

4 Day Course

Kit Content

Finger Cots (20)
Practice Finger
Facial Mask
Cotton Wool
Nail Wipes x50
Orangewood Stick
Plastic Cuticle Pusher
Nail Clipper
Glass Dappen + Lid
Menda Pump
Dusting Brush
3D Nail Art Sticker
100xTps FW
400xTps Natural
Brush-On Glue 14g
Gold Buffer x2

Kit Content

File x3
Miracle Shiner
10ml Top Coat
10ml Cuticle Oil
200ml Acetone
50ml Sani-Spray
50ml Anti-Bac Soap
100ml Monomer
100ml Brush Cleaner
Student Bag
Acrylic Manual
Client Card x4
Powder 30g White
Powder 30g Pink
Kryolan Satinyl Brush
Primer Pen
Plastic Dropper

Full Course

Acrylic + Gel + Silk/Fibre + Acrylic Dip

Course Dates

Follow the dates from the courses shown on the left.

R6950

7 Day Course

Kit Content

Combination of all the systems.

Exact contents are shown on our website.

Acrylic Dip

DAY 1

Theory
Lunch Break
Basic Manicure
Tip Application
Tip Overlay
Incl Fills, Repairs, Removal.

2009 Course Dates

23 Oct, 6 Nov,
20 Nov, 4 Dec, 18 Dec
These courses run often.
Call for extra dates.

Kit Content

Finger Cots (20)
Practice Finger
Mask
Cotton Wool
Nail Wipes x50
10ml Top Coat
Orangewood Stick
Plastic Cuticle Pusher
Nail Clipper
Tip Overlay
Glass Dappen + Lid
Menda Pump
3D Nail Art Sticker
Dusting Brush
100xTps FW
100xTps Natural
Brush-On Glue 14g
Brush-On Cap Sealer
Black Buffer x2
File x3

Kit Content

Miracle Shiner
10ml Top Coat
10ml Cuticle Oil
200ml Acetone
50ml Sani-Spray
50ml Anti-Bacterial Soap
Student Training Bag
Acrylic Dip Manual
Certificate of Attendance
Client Record Card x4
Powder 30g White
Powder 30g Pink
50ml Resin Activator
Primer Pen
French Tip Guides (x54)

REVOLUTION

NAIL FORMS

Revolution Workshops Available
Acrylic & Gel Conversion Courses Available

Nail Art

Call to make a booking. From **R850**
No Kit included. 1 Day Course

Electric Drill

R1595

1 Day Course
Incl Electric Drill & Certificate
* offer subject to booking a Nail Course



SERIOUS ABOUT TRAINING !!

Call 0861-4-NAILS
or email training@planetnails.co.za
for details of your closest school



Our Beauty Trainers have CIDESCO/ITEC Qualifications.
All Nail Trainers are Registered as Facilitators & Assessors with Services SETA. 40+ Schools across SA.

All details on our website

www.planetnails.co.za/training